

ABOUT YOUR BILLING STATEMENT

Typically, itemized statements are mailed monthly to patients. Insurance companies are billed weekly. We will file your insurance claim in most cases as a courtesy if we are provided with complete, timely and accurate information.

Please remember that you are liable for policy deductibles, co-pays, co-insurance and charges not covered by your policy.

Insurance companies will generally respond between 30 to 60 days. If you have a balance due 90 days and older on your statement the balance is your responsibility. Should your insurance make a payment at a later date, you will be refunded the balance

TIME OF SERVICE PAYMENT DISCOUNT

For all of our patients who have Chiropractic services and pay in full at the Time of Service and have a \$0 account balance, we are offering a TOS Discount. Currently, the **CHIRO-PRACTIC SERVICES DISCOUNT is 10%.**

We will not bill your insurance company for the services. (We will gladly provide a computerized receipt upon request. You may use this receipt to bill your insurance company.)

Please Verify Insurance Coverage for 2008

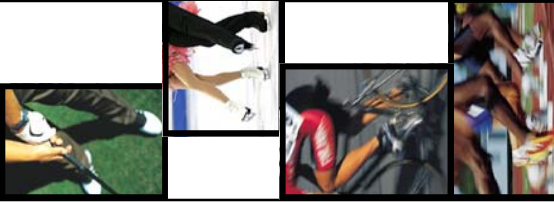
Make sure your insurance provider is very clear with you regarding any changes in deductibles and/or coverage of services. It's very important to know the kind of coverage you have to avoid any unexpected bills. An insurance verification form is available on our website www.bimssportsinjuries.com to assist you in asking all the right questions.

Office Hours:

Monday thru Friday
7:00am - 8:00pm

Saturday's 8:00am - 2:00pm

Manage Gift Certificates Avail-



Sports Chiropractic Physicians

Dr. Ted Forcum

Dr. Tamara Lovelace

Dr. Steve Hanson

Licensed Massage Therapist

Michael Collins, LMT*

Stefan Furst, LMT*

Molly Verschingel, LMT*

Melissa Rhines, LMT

Holley DeShaw, LMT*

Exercise Physiologist

Mike Boggs, BS, MBA, CSCS*

*Independent Contractors



TO HELP US BETTER SERVE YOU:

When making a chiropractic appointment, we ask that you inform us if we are scheduling a follow-up visit for a condition we have treated within the last six months. If you are scheduling an appointment and it has been over six months since we last treated you, or if you want to be seen for a new condition, please let us know as we will need to set aside 45 minutes to make sure we have enough time to examine you properly. Thank you for your understanding and cooperation.

BACK IN MOTION
SPORTS INJURIES CLINIC, LLC

11385 SW Scholls Ferry Road
Beaverton, Oregon 97008



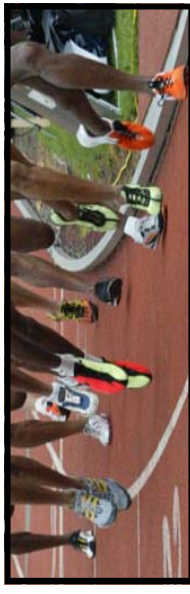
HANDS ON CARE OF SPORTS

BACK IN MOTION
SPORTS INJURIES CLINIC,



January 2008

Newsletter



HANDS ON CARE
OF

11385 SW Scholls Ferry Road
Beaverton, Oregon 97008
(503) 524-9040
www.bimssportsinjuries.com